

# Enfield Crime and Anti-Social Behaviour Performance Report

## Executive Summary

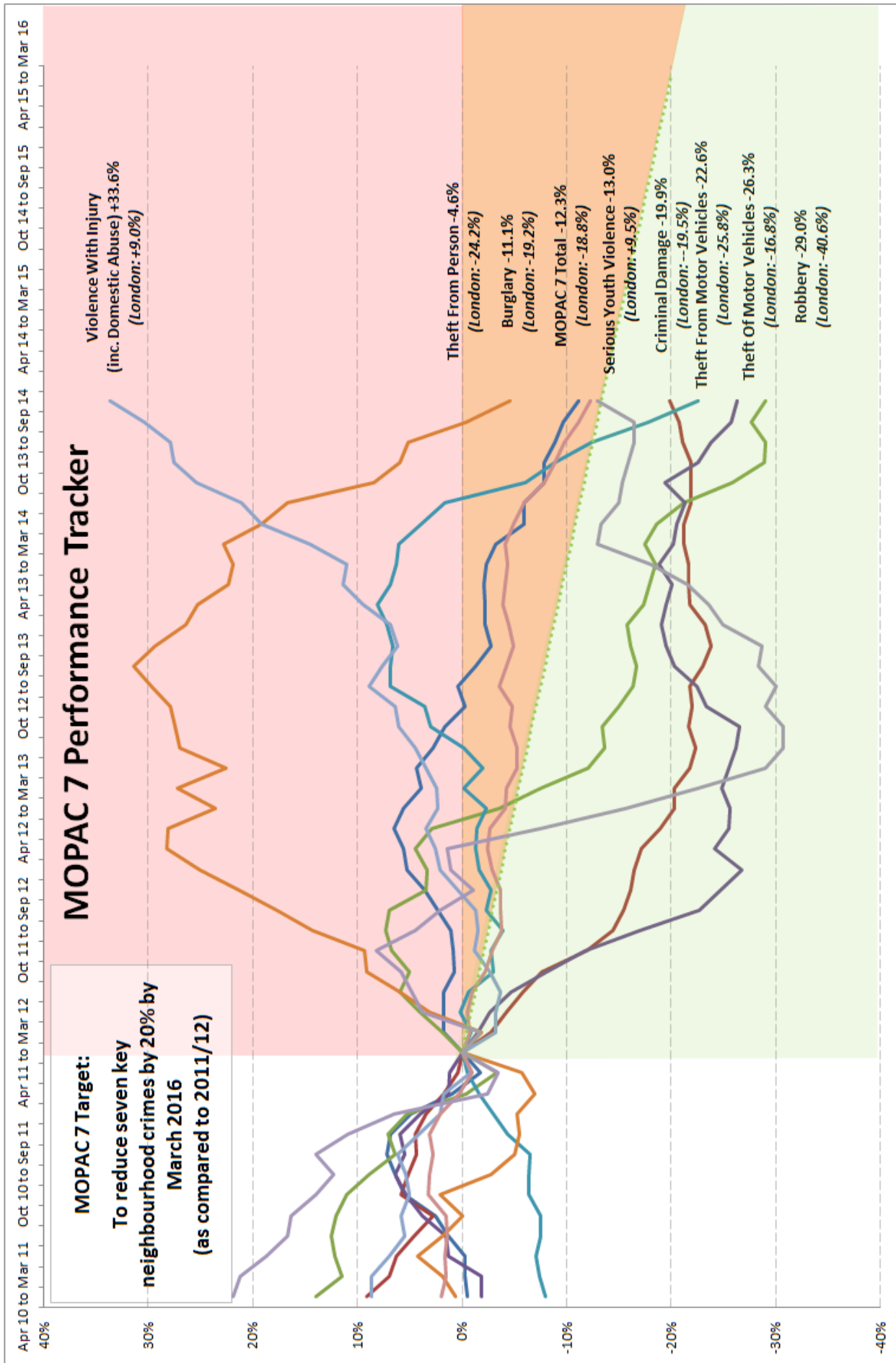
- ASB calls (-24.8%), Burglary (-10.2%), Theft from Person (-28.8%), Robbery (-15.8%), Theft from Motor Vehicles (-27.0%), Theft of Motor Vehicles (-7.1%) and overall Serious Acquisitive Crime (-17.6%) are all currently experiencing reductions in the rolling 12-months to 13<sup>th</sup> November 2014.
- There has been a large increase in Police referrals to MARAC (in excess of +100%). This has been partially due to improvements to the systems through which referrals are made.
- A significant increase in knife injuries has been noted across the borough in recent months.
- Two of seven MOPAC indicators are currently experiencing increases in the 12-months rolling (Criminal Damage +3.6% and Violence with Injury +24.1%). Overall, MOPAC seven crime types are experiencing a -8.5% decrease in the rolling 12 months to date.
- For the 12 months to November 2014, Enfield was one of only seven London boroughs experiencing an increase in Total Notifiable Offences (+0.2%). London overall has experienced a decrease in crime over this same period of approx. -4.2%.

## 1. Performance Overview

### MOPAC 7 and SSCB Priorities

MOPAC 7 (Data to 13th November 2014)						
Crime Type	Baseline 2011/12	Target 2015/16	Current 12- Months	% Change 12-Months	Enfield % Change Baseline	MPS % Change Baseline
Burglary	3,542	2,834	3,148	-10.2%	-11.1%	-19.2%
Criminal Damage	2,598	2,078	2,080	3.6%	-19.9%	-19.5%
Robbery	1,123	898	797	-15.8%	-29.0%	-40.6%
Theft from M/V	3,011	2,409	2,331	-27.0%	-22.6%	-25.8%
Theft of M/V	1,082	866	797	-7.1%	-26.3%	-16.8%
Theft from Person	474	379	452	-28.8%	-4.6%	-24.2%
Violence with Injury	1,674	1,339	2,237	24.1%	33.6%	9.0%
MOPAC 7 Total	13,504	10,803	11,842	-8.5%	-12.3%	-18.6%
Additional SSCB Priorities						
ASB Calls	14,014	11,211	9,448	-24.8%	-32.6%	-21.7%
Hate Crime	123	NA	312	23.8%	154.7%	21.0%
Serious Acquisitive Crime <sup>1</sup>	7,846	6,276	6,145	-17.6%	-21.7%	-13.9%
Serious Youth Violence	293	232	255	21.4%	-13.0%	9.5%
Domestic Abuse	1,946	NA	2,366	26.5%	21.6%	21.0%
Total Notifiable Offences	22,946	NA	22,445	0.2%	-2.2%	-3.6%

- Serious Acquisitive Crime is defined as Domestic Burglary, Robbery (Personal & Business), Theft from Motor Vehicle and Theft of Motor Vehicle.



## Enfield Crime and Anti-Social Behaviour Performance Report

### London Borough Ranking Tables – MOPAC 7 & Total Notifiable Offences Percentage Changes

MOPAC 7 Crime				
Borough	Nov12 - Oct 13	Nov13 - Oct 14	Change	Rank (Previous)
Westminster	23,584	20,052	-15.0%	1 (2)
Lambeth	18,819	16,018	-14.9%	2 (4)
Camden	14,188	12,094	-14.8%	3 (6)
Lewisham	12,513	10,733	-14.2%	4 (1)
Wandsworth	12,527	10,785	-13.9%	5 (3)
Croydon	15,933	13,742	-13.8%	6 (10)
Southwark	16,400	14,208	-13.4%	7 (13)
Waltham Forest	12,288	10,693	-13.0%	8 (12)
Kingston upon Thames	4,452	3,936	-11.6%	9 (7)
Barking & Dagenham	9,240	8,179	-11.5%	10 (11)
Ealing	14,064	12,509	-11.1%	11 (5)
Hackney	13,506	12,161	-10.0%	12 (18)
Harrow	6,960	6,307	-9.4%	13 (9)
Havering	8,604	7,815	-9.2%	14 (16)
Merton	6,509	5,938	-8.8%	15 (8)
Newham	16,058	14,668	-8.7%	16 (15)
Barnet	13,167	12,038	-8.6%	17 (19)
<b>Enfield</b>	<b>12,944</b>	<b>11,842</b>	<b>-8.5%</b>	<b>18 (21)</b>
Redbridge	11,232	10,284	-8.4%	19 (14)
Hounslow	9,786	9,049	-7.5%	20 (17)
Sutton	5,796	5,397	-6.9%	21 (22)
Tower Hamlets	12,792	11,992	-6.3%	22 (23)
Richmond upon Thames	5,657	5,322	-5.9%	23 (20)
Kensington & Chelsea	7,947	7,539	-5.1%	24 (25)
Hammersmith & Fulham	8,071	7,682	-4.8%	25 (24)
Islington	12,990	12,377	-4.7%	26 (27)
Brent	12,220	11,660	-4.6%	27 (26)
Bromley	10,347	10,028	-3.1%	28 (28)
Greenwich	9,840	9,691	-1.5%	29 (30)
Hillingdon	10,355	10,733	3.7%	30 (29)
Haringey	12,247	12,944	5.7%	31 (31)
Bexley	6,034	6,398	6.0%	32 (32)
<b>London Total</b>	<b>367,060</b>	<b>334,909</b>	<b>-8.8%</b>	

Total Notifiable Offences (TNO)				
Borough	Nov12 - Oct 13	Nov13 - Oct 14	Change	Rank (Previous)
Westminster	57,347	49,625	-13.5%	1 (1)
Camden	30,597	27,005	-11.7%	2 (2)
Wandsworth	23,801	21,568	-9.4%	3 (3)
Waltham Forest	23,069	21,017	-8.9%	4 (8)
Merton	12,474	11,472	-8.0%	5 (4)
Southwark	32,538	29,941	-8.0%	6 (10)
Ealing	27,535	25,416	-7.7%	7 (5)
Lewisham	23,461	21,713	-7.5%	8 (6)
Hackney	26,701	24,916	-6.7%	9 (9)
Havering	15,901	14,996	-5.7%	10 (14)
Tower Hamlets	27,817	26,236	-5.7%	11 (13)
Croydon	29,255	27,746	-5.2%	12 (12)
Richmond upon Thames	11,049	10,496	-5.0%	13 (7)
Kensington & Chelsea	18,930	18,064	-4.6%	14 (11)
Barking & Dagenham	16,772	16,028	-4.4%	15 (15)
Redbridge	20,779	20,160	-3.0%	16 (17)
Barnet	23,701	23,015	-2.9%	17 (19)
Lambeth	33,725	32,764	-2.8%	18 (22)
Harrow	12,583	12,299	-2.3%	19 (16)
Hounslow	20,323	19,958	-1.8%	20 (20)
Hammersmith & Fulham	19,675	19,345	-1.7%	21 (21)
Kingston upon Thames	9,520	9,365	-1.6%	22 (18)
Sutton	10,602	10,442	-1.5%	23 (25)
Islington	25,364	25,003	-1.4%	24 (23)
Newham	29,026	28,702	-1.1%	25 (24)
<b>Enfield</b>	<b>22,399</b>	<b>22,445</b>	<b>0.2%</b>	<b>26 (27)</b>
Brent	25,191	25,275	0.3%	27 (26)
Greenwich	19,988	20,402	2.1%	28 (29)
Bromley	19,543	20,009	2.4%	29 (28)
Bexley	11,728	12,287	4.8%	30 (30)
Hillingdon	19,425	20,934	7.8%	31 (32)
Haringey	21,456	23,356	8.9%	32 (31)
<b>London Total</b>	<b>722,254</b>	<b>691,974</b>	<b>-4.2%</b>	

## 2. Serious Acquisitive Crime (SAC)

### Robbery

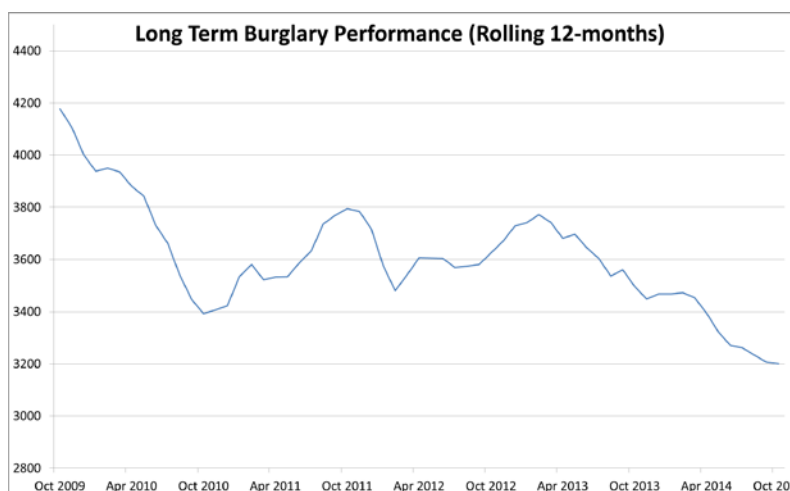
- Robbery has experienced an improvement of **-1.8%** (-14.0% to -15.8%) following extra policing resources being deployed in Enfield.
- Currently experiencing a **-15.8% reduction** in the rolling 12-months and a -29.0% reduction compared to 2011/12.
- Long term personal robbery reductions have been driven by falls in youth-related offending, and particularly that which occurred around schools. However, offending patterns have recently evolved, leading to an increased number of adult victims being targeted.
- Responses to the historic rise in youth robbery at the start of the school year have been implemented, which is also being monitored through the Enfield Joint Tasking Action Group (JTAG) process.

### Vehicle Crime

- Total Vehicle Crime has experienced an improvement following extra policing resources being deployed in Enfield, with Theft from Motor Vehicles falling by **-18.5%** (-8.5% to -27.0%) and Theft of Motor Vehicles falling by **-16.9%** (+9.8% to -7.1%)
- Currently experiencing a **-27.0% decrease** for Theft from M/V and a **-7.1% decrease** for Theft of M/V in the rolling 12-months.
- The launch of Operation Spyder has seen an improvement in Theft from M/V performance, since early 2014.
- More than three-quarters of all vehicle crime offences are Theft from M/V which can be broken down into distinct specific problems, the most notable of which are:
  - Licence plates being taken stolen – no pattern, but high volume (approx. 30%)
  - Tools being taken from commercial vehicles, such as vans, at retail and industrial estate car parks (approx. 20%)
  - Smashed window entries, taking items from dashboard/glove compartment, such as sat-navs, stereos, cash and mobile phones. Predominantly within the Edmonton wards (approx. 20%).

### Burglary Dwelling

- Currently experiencing a **-10.2% reduction** in the rolling 12-months and an -11.1% reduction compared to 2011/12.
- The seasonal low months (April-September) have been used to prepare for the winter seasonal peaks (October-March). Joint work between the local authority and Metropolitan Police has sought to sign up alley gate schemes in the 25 hardest hit streets/clusters for rear-entry burglary, not currently gated. A joint action plan and burglary initiative has also been developed to deliver an intense burglary reduction initiative, which is implemented through the 'Safe As Houses' model. Additionally, SmartWater is currently being deployed through the Neighbourhood Watch schemes.
- This work is monitored through the Enfield Joint Tasking Action Group (JTAG).



## 3. Violence Against Women & Girls (VAWG)

### Domestic Abuse Strategic Sub-Group (DASG)

The latest DASG performance framework was updated in October 2014. The main summary headlines for discussion included:

- Reported Domestic Abuse Violence with Injury offences have risen by +31.3% over the past 12-months (210 additional reports to police).
- There has been a rise in reported rape offences of +11.6% during the same period (17 additional reports to police).
- The sanctioned detection rate for Domestic Abuse has risen from 45.9% to 50.2%. Over this same period, London wide indicative comparator data shows a decrease in the sanctioned detection rate of -5.8% (50.3% to 44.5%).
- 26.0% of reporting victims suffered at least one repeat crime. This compares to 23.0% for those cases referred to MARAC and 24.8% for those referred to IDVA services, highlighting the complexities of managing such high risk cases.
- There has been a significant increase in the number of MARAC referrals made by police and partnership agencies over the past year.

## 4. Serious Youth Violence

- Currently experiencing a **+21.4% increase** in the rolling 12-months and a -13.0% reduction compared to 2011/12. London has experienced an overall increase of +9.5% in the past 12-months.

### Serious Youth Violence Volume Change Map (12-months data)

- Enfield is one of the top 10 highest percentage increase boroughs for Serious Youth Violence (SYV) over the past 12 months.
- Neighbouring boroughs Haringey and Waltham Forest are experiencing large increases, as well as most other North and Central London boroughs.

